

State of Wyoming Corner Record

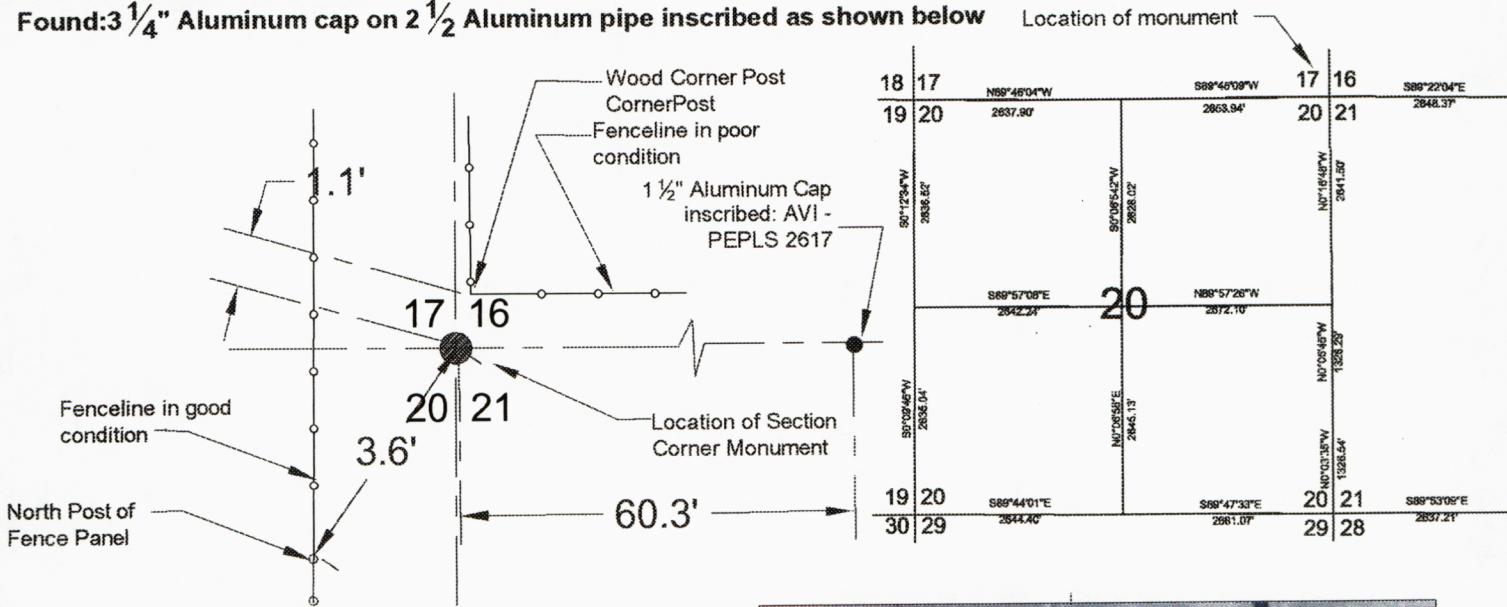
(In compliance with the CORNER PERPETUATION AND FILING ACT, Wyoming Statutes, 1997, Section 33-29-140 et. seq., and the Rules and Regulations of the Board of Registration for Professional Engineers and Professional Land Surveyors)

Reverse side of this form may be used if more space is needed.

Record of original survey and citation of source of historical information (if corner is lost or obliterated). Description of corner monumentation evidence found and/or monument and accessories established to perpetuate the location of this corner. Sketch of relative location of monument, accessories, and reference points with course and distance to adjacent corner(s) (if determined in this survey). Method and rationale for reestablishment of lost or obliterated corner.

Record: Set Granite Boulder 23 x 9 x 5

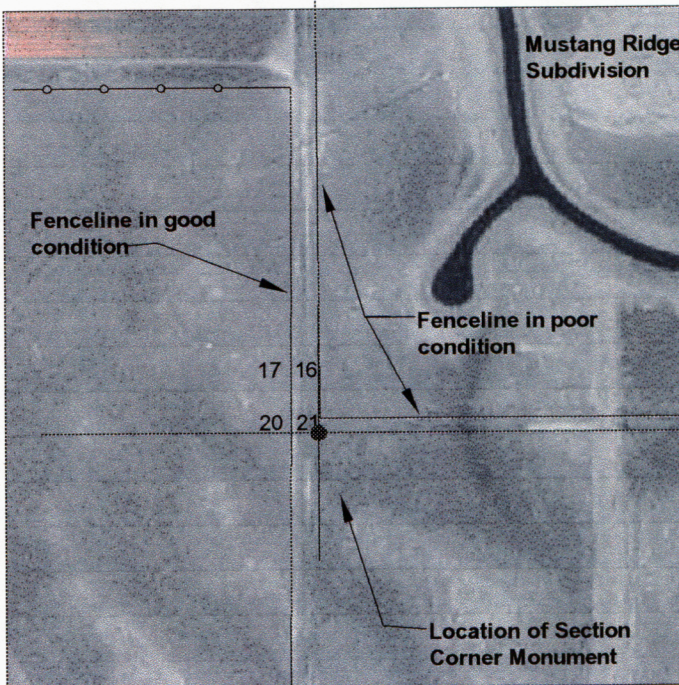
Found: 3 1/4" Aluminum cap on 2 1/2" Aluminum pipe inscribed as shown below



Corner Ties Detail



Cap Stamping Detail

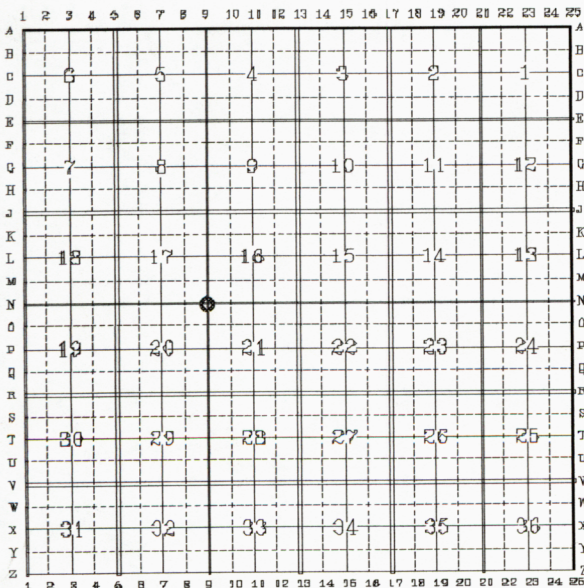


Vicinity Map

Date of Field Work: April 2002

Office Reference: 2310 - Storey Blvd

CROSS INDEX DIAGRAM



Firm/Agency, Address

Washington Infrastructure Services

5920 Yellowstone Road

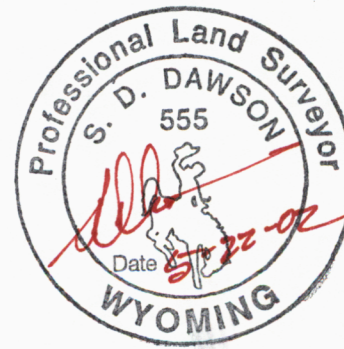
Cheyenne, Wyoming 82009

Telephone Number: 307-634-1101

This corner record was prepared by me or under my direction and supervision.

SEAL & SIGNATURE

[Handwritten Signature]



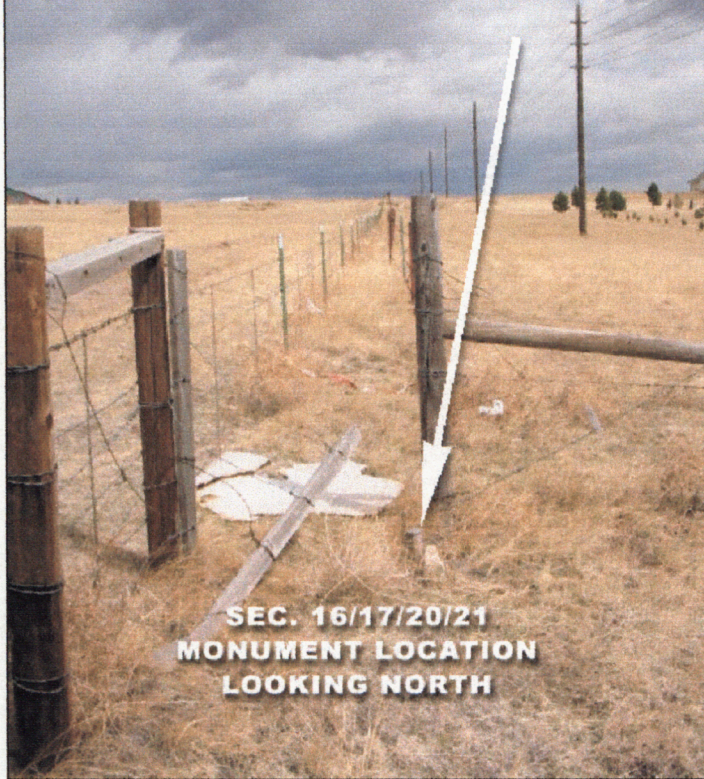
Corner Name: NE Section 20

Section: 20 T 14N R 66W ; 6th

P.M. Cross-Index No.: N-9

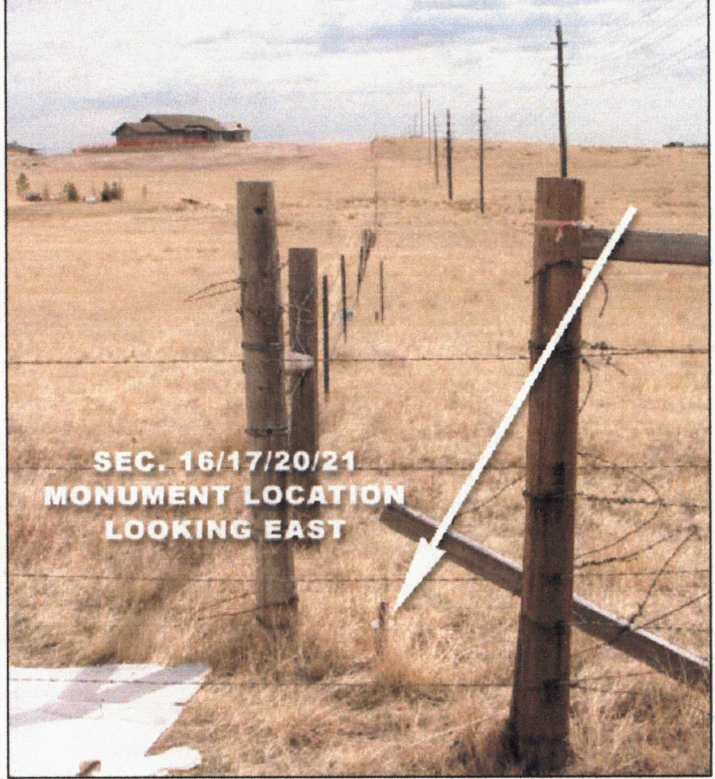
SBRPEPLS/PLSW: March 1994; PLSW January 1998

APRIL 2002
STOREY BLVD.
2310



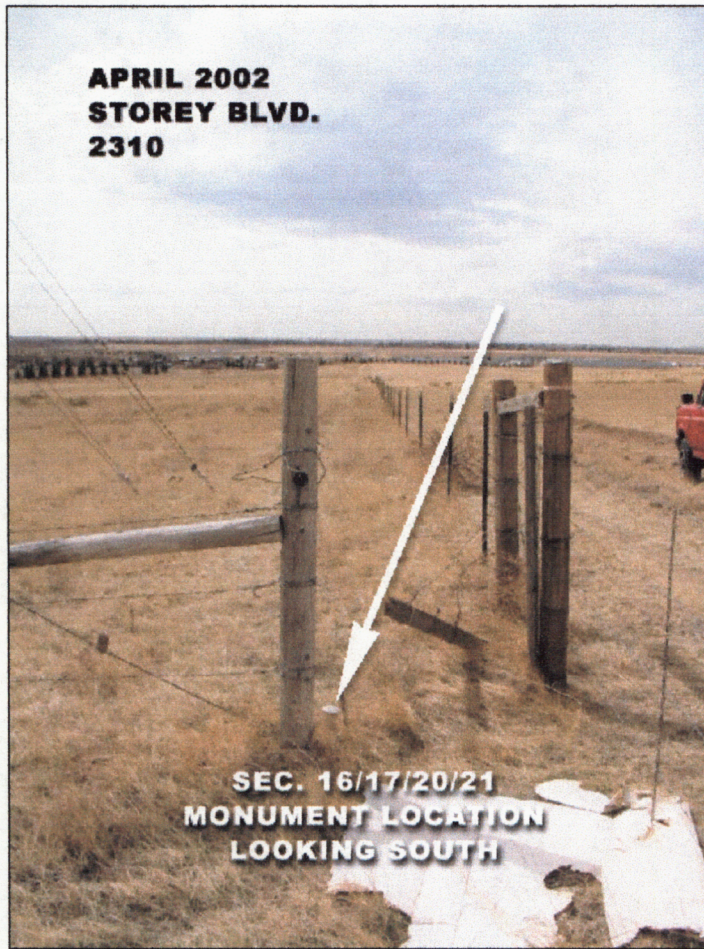
SEC. 16/17/20/21
MONUMENT LOCATION
LOOKING NORTH

APRIL 2002
STOREY BLVD.
2310



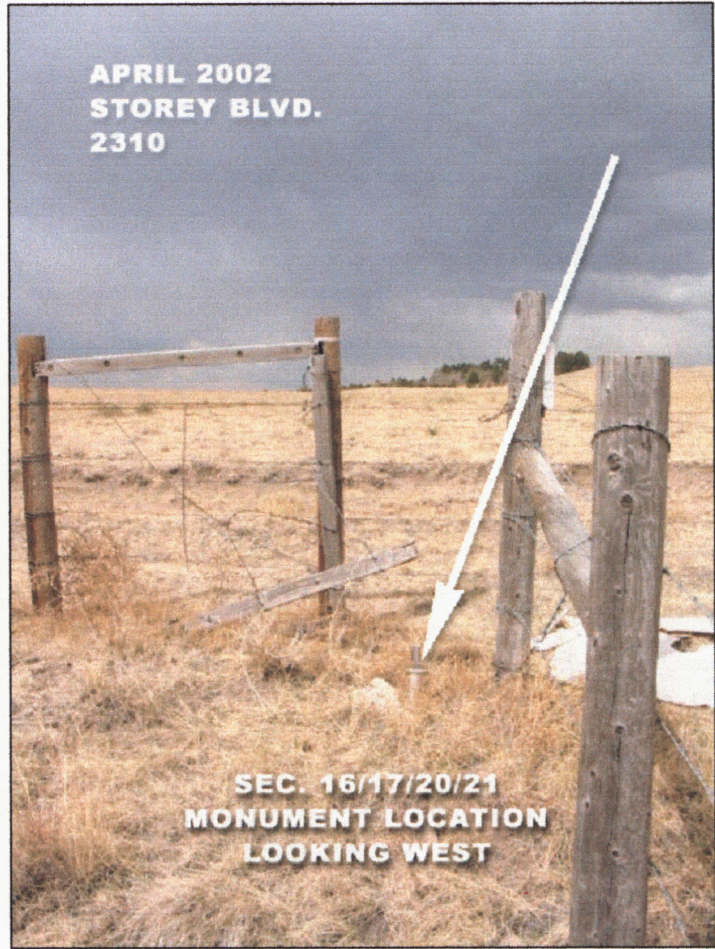
SEC. 16/17/20/21
MONUMENT LOCATION
LOOKING EAST

APRIL 2002
STOREY BLVD.
2310



SEC. 16/17/20/21
MONUMENT LOCATION
LOOKING SOUTH

APRIL 2002
STOREY BLVD.
2310



SEC. 16/17/20/21
MONUMENT LOCATION
LOOKING WEST

